

Operating Table

Gynecological and

Delivery Table

LDR Bed

Catalogue

Mr. Andrew

General Manager

China Shikang Medical Equipment Group Limited

Tel:0086-574-87489856, Fax:0086- 574- 87489856

Mobile: 0086-18657415186 0086-13685829586

Msn: jiangxinggen1016@hotmail.com

Skype: [Andrew4531](https://www.skype.com/user/Andrew4531)

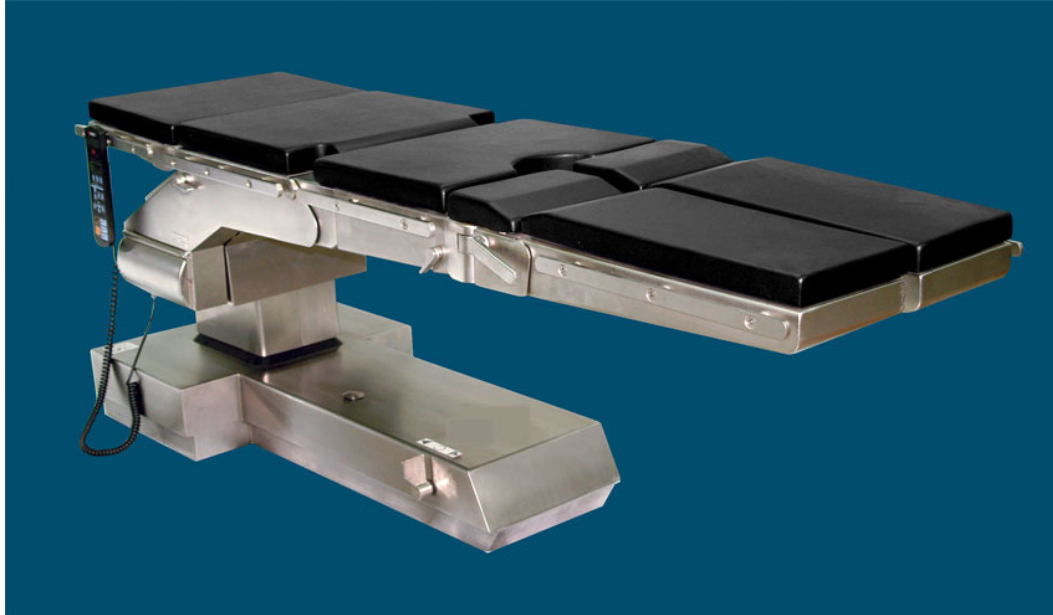
E-mail: info@worldhealthmed.com

Website:

<http://www.worldhealthmed.com>

Operating Table

1. WH-E



Double control panels (hand controller and table-fixed controller)

Dual hydraulic control system. In the case of main hydraulic system become out of order, the backup hydraulic system will remain the operating table working in order.

Integrated with a battery pack, enables the operating table to work independent of the AC power.

Build-in with a complex winding button to provide more convenience for gallbladder and kidney surgery.

An eccentrically support structure allows the exchanging of head section with leg section to make possible fluoroscopy and the whole body X-ray examination with C-arm X-ray machines.

Application of superior stainless steel and special kinds of alloy ensures high reliability and safety.

Specitication:

Tabletop length 2000mm

Tabletop width 520mm

Tabletop height adjustment range 740~1120mm

Trendelenburg $\pm 25^{\circ}$

Lateral tilt $\pm 15^{\circ}$

Head section adjustment range Upward $0\sim 20^{\circ}$, Downward $0\sim 30^{\circ}$, detachable

Back section adjustment range Upward $0\sim 25^{\circ}$, Downward $0\sim 25^{\circ}$

Seat section adjustment range Upward $0\sim 75^{\circ}$, Downward $0\sim 40^{\circ}$

Leg section adjustment range Downward $0\sim 85^{\circ}$, Abduction $0\sim 180^{\circ}$

Foot section adjustment range Upward $0\sim 10^{\circ}$, Downward $0\sim 70^{\circ}$

2. WH-F



WH-F electrical operating table is a new version of high level electrical operating table, which adopts a unique stand column supporting the tabletop at the head end. This structure makes the tabletop locate in the place outside the area covered by supporting column, and provide a maximum space for the X-ray examination. The tabletop of WH-F is well contrived to meet the neurosurgery demand, by designation of four sections with wide angle turnings, which enables the table to form most kinds of postures required in the sophisticated neurosurgery. This is the first choice of a operating table for neurosurgeons

WH-F contains enormous functions including one key resetting, two control panels--wire remote controller and emergency table mount controller, and in addition, it has provided an options for additional wireless controller.

WH-F integrates two independent hydraulic and control system, and is either run by DC (as medical safety power source) or by AC power (as emergency standby power), while all the key parts are sourced from international first rate companies for high reliability and leading technology. Equipped with different accessories, the SKME12-F is also possible for all purpose of surgeries in different levels of hospitals

Technical data:

Total length of tabletop: 2000mm

Width of tabletop: 520 mm

Elevation of tabletop: 740_1120 mm

Trendelenburg movement: $\pm 25^\circ$

Lateral movement: $\pm 15^\circ$

Head section upward: $\geq 25^\circ$ Head section downward: $\geq 25^\circ$

Back section upward: $\geq 75^\circ$ Back section downward: $\geq 40^\circ$

Leg section upward: $\geq 70^\circ$ Leg section downward: $\geq 90^\circ$

Power: AC 220 V, 50 Hz

Storage battery: 24V, 24Ah

Standard accessories:

- Anaesthesia screen 1 PCS
- Body support 2 PCS
- Knee crutch 2 PCS
- Arm rest 2 PCS
- Body strap 1PCS
- Clamps 7 PCS

Optional accessories:

- double deck sheet arm rest
- multipurpose head rack
- orthopedic tractor
- simple head rest
- accessories trolley
- X-ray film cassette holder

3. WH-D.IV



WH-D·IV is a high-grade synthesizes multi-functional operating table. Is the introduction overseas advanced technology. Which can be applied to all kinds of operations. The operation is extremely convenient. It can do the C shape arm、X-ray examination and photography on the whole body. Also the head part and the leg part of the table can exchange.

Technical Specifications:

Length:2000±50mm

Width:500±20mm

Maximum and minimum height of the platform:(740~1100)±50mm

Forward:≥25°

Backward:≥25°

Leftward:≥15°

Head board fold upward:≥25°

Head board fold downward:≥25°

Seat board fold upward:≥70°

Seat board fold downward:≥25°

Leg board fold upward:≥15°

Leg board fold downward:≥60°

Foot board fold downward:≥75°

Foot board furcation include angle:≥180°

Mains voltage:AC 220 50Hz

Accumulator Cell:12V 12Ah

Input power:500VA

4. WH-D·IB



WH-D·IB ELECTRICAL OPERATION TABLE

WH-D·IB is a multi-functional operating table and can be adjusted to very low position, which meets the requirements for not only various surgical operation but also X-ray examination and photography of different parts of human body. Small-sized touch controller ensures precise and reliable adjustment of different positions.

The exterior surface being made of stainless steel, the table gives a beautiful appearance and is corrosion resistant. It is an ideal choice for surgical operations.

The table adopts electric-hydraulic control, and has small-sized touch controller for flexible operation. It adopts famous brand engine hydraulic pump and electromagnetism valve which are imported from Japan. It makes low level of noise and it is reliable in performance.

Technical Specifications:

Length:2000±50mm

Width:500±20mm

Maximum and minimum height of the platform:(550~850)±50mm

Forward:≥20°

Backward:≥15°

Leftward:≥15°

Rightward:≥15°

Leg board fold downward:≥90°

Leg board fold outward:≥90°

Back board fold upward:≥70°

Backboard fold downward:≥20°

Head board fold upward:≥30°

Head board fold downward:≥90°

Waist board lifting:120mm

Mains voltage:AC 220V±10% 50Hz

Input power:500VA

5. WH-D.II



WH-D·II is widely used in various surgical operations. With the delicately designed eccentric column, the table is especially fit for X-ray photography in surgical operation. The shell of the complete device is made from stainless steel. It is corrosion resistant, can be easily cleaned, and gives a beautiful appearance.

The table adopts electric-hydraulic control and it has small-sized touch controller for flexible operation. It adopts famous brand engine hydraulic pump and electromagnetism valve which are imported from Japan. It makes low level of noise and is reliable in performance.

Technical Specifications:

Length:2000±50mm

Width:520±20mm

Maximum and minimum height of the platform:(750~1000)±50mm

Forward:≥15°

Backward:≥35°

Leftward:≥20°

Leg board fold downward:≥90°

Back board fold upward:≥70°

Back board fold downward:≥15°

Head board fold upward:≥40°

Head board fold downward:≥90°

Waist board lifting:≥100mm

Main Voltage:AC 220V 50Hz

Input power:600VA

6. WH-DL·C



WH-DL·C electric operating table is of the Integrated multi-function type, which meets the demands of all kinds of operation. It can also be used for conducting X-ray examination and photography.

The base is made of high-quality stainless steel, while the table-board is made of High-quality carbon plastic plate, which is easy to clean and sterilizing. The operating table Imported electric machine pumps are adopted for the operation tables. This operation table adopts as the driving force of all movements, manipulating through the hand-controller. It is characterized by flexible, reliable, non-pollution and long usage time.

Technical Specifications:

Table length:2000mm±50mm

Table width:500mm±20mm

Maximum and minimum height of the platform:(750~1000)±50mm

Forward:≥25°

Backward:≥35°

Leftward:≥15°

Head board fold upward:≥40°

Head board fold downward:≥90°

Waist board lifting:≥100mm

Leg board fold downward:≥90°

Leg board fold outward:≥90°

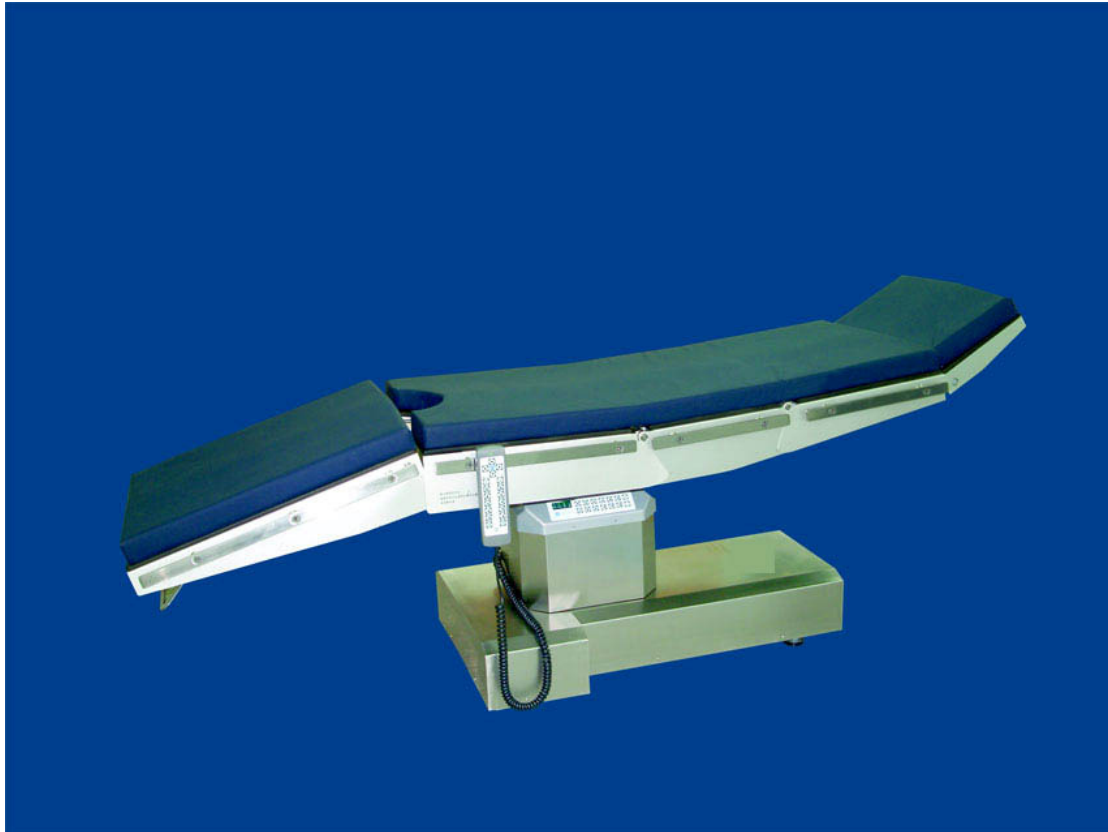
Back board fold upward:≥50°

Back board fold downward:≥20°

Main Voltage:AC 220V 50Hz

Input power:300VA

7. WH-D



WH-D serves as a multi-purpose operation table, suitable for thoracic abdominal surgery, cerebral surgery, ENT, gynecology and obstetrics as well as urology surgery.

Summary of Features and Properties:

1. The operating table is controlled by microprocessor. Two control panels are available, suitable for operation from different positions. Locking keys are designed to avoid false operating.
2. Integrated hydraulic system adopts imported components, which guarantees low noise feature and ensures the reliability of the table.
3. Extra low position has been designed especially for cerebral and ophthalmic surgery. Doctor is able to take a seat during operation.
4. The whole table's top can be moved forward, Back-ward, left-ward and right-ward, which permits maximum full body use for a C-arm, X-ray unit.
5. Extra width of table meets today's clinical requirement.
6. SKME12-D is divided into five sections. Including Head Section. Shoulder Section. Body Section, Pelvis Section and Leg Section. The surfaces of these sections are made of radiolucent material. By putting the X-ray film container between the upper and bottom deck of the table, radiographic examination can be carried out without moving the patient.
7. The movement of all sections are controlled by electric-driven. Hydraulic controlled system. Except for Head Section and Leg Section, which is made manually.
8. Shoulder section and body section can be Elevated, which make surgeries on gallbladder and kidney much easier.

9. The maneuverability and stability table base is flexible and reliable.
10. With wide range of accessories, the table is suitable for all kinds of operation.
11. The whole unit is in accordance with the National Safety Standard for medical electric appliance.
12. The operating table is compact in structure and new in design.

Specitication:

1. Table top: Overall length: 2060mm; Width: 480mm
2. Range of table height: Minimum: 550mm; Elvatint range: 330mm
3. Motor-powered longitudinal shift for the table tops: 220mm

Optional accessories:

1. Anaesthesia screen 1set
2. Knee crutches 1set
3. Body Support 1set
4. Mattress 1set
5. Cassette Support 1set
6. Body strap 1set

8. WH-B



Electrical Operating Table WH-B

WH-B serves as a multi-purpose operation table, suitable for thoracic abdominal surgery, cerebral surgery, ENT, gynecology and obstetrics as well as urology surgery.

Summary of features and properties:

1. Integrated hydraulic system ensures the reliability of the table.
2. Superior stainless steel housing for the base and support system of the table makes cleaning and sterilization a easy matter. Ergonomic design provides the table with a clearcut. All mattress are cast and made from polyester rubber.
3. The back section of the table is movable, on which an elevator can be fit for the operation on kidney or gall-bladder.
4. The surfaces of the table are made of plexiglass, By putting the X-ray film container between the upper and bottom deck of the table, radiographic examination can be carried out without moving the patient.
5. All the clamps for fixing the accessories are detachable and easy to use.
6. With the head rest and the double-sheet arm rest, which is optional accessories, the cerebral surgery and lateral surgery are convenient.

Specification:

Table board: 2070x500mm(LxW)

Height of table: Minimum of height 650mm,

Adjustment range 0 to 300mm

The lateral adjustment: -19degree to +19degree

Trendelenburg adjustment: -29degree to +29degree

Back section: Up to +75degree

Head section: -90degree to 45degree, detachable

Leg section: Bifurcated type,

Abductable up to 180(90either side) down position up to 90 detachable.

Foot section level with or vertical to table board, detachable.

Elevator range of kidney bridge: >120mm

Power Supply: 220V, 50Hz

Electric motor: Single phase, differential speed, 370W 1400rpm

Optional accessories

Double deck arm rest

Neurosurgery head rest

9. WH-YS.A



WH-YS·A electric Ophthalmic operating table is a kind of Ophthalmic equipment which is designed and developed for the special requirement of operation. The up and down movement of the table board adopts the electric and hydraulic cylinder working principle. The operating table also possesses the Ultra-low-position design and its motors and electromagnetic valves are all imported ,it works smoothly, noise free with high reliability.

The head board is matched with Manually adjustable up and down mechanisms, which can be folded upward and downward, thus providing the best point view of the operation.

Technical Specifications:

Table length:1970mm±50mm

Table width:600mm±20mm

Height:550mm±50mm

A high degree of surface conditioning:≥250mm

Forward:≥15°

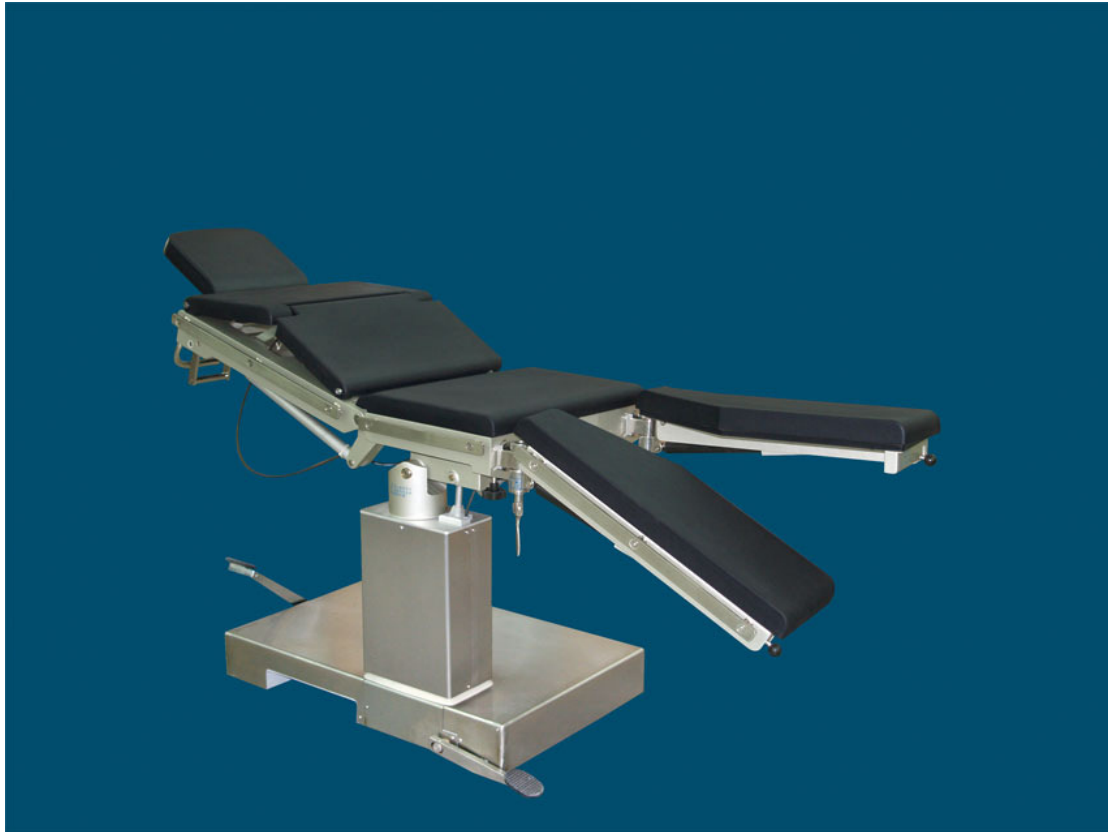
Backward:≥15°

Head board fold upward:≥20°

Head board fold downward:≥90°

Head plate vertical fluctuation: +50mm-30mm

10. WH-3



WH-3 Deflective Pillar Operating Table is suitable for operation and inspection on thoracic and abdominal surgery, thoracic surgery, ophthalmological surgery, ENT, gynecology and obstetric as well as urology surgery In hospitals and clinics.

Feature:

- The overall hydraulic system applies new-type pillar-plug pump and imported hydraulic sealer, safe and reliable.
- Wide table board, suitable for fatter person also.
- For active sections of table board: head section, back section, abdomen section and leg section. All the sections are made of polymethyl methacrylate for C-arm shot.
- Lockable and removable basement.
- Versatile accessories for different operations, to enlarge the clinical cover.
- Easy operation, reasonable structure and novel style.
- The Cover and accessories are made of stainless material, not easy to erode.

Main Specifications :

- Height of table: minium height \geq 730mm(including mattress)、Adjustment range \geq 250mm。
- Head section:-90° \sim +45°,detachable
- Back section:-30° \sim +75°
- Leg section:downward 90°,abductable horizontally 70°,detachable
- Trendelenburg adjustment:20°
- Antitrendelenburg adjustment:25°
- Lateral adjustment:-15°to +15°
- Kidney bridge: \geq 120mm

Mandatory Accessories :

- | | |
|-------------------------|------|
| · Anesthesia screen | 1set |
| · Body support | 1set |
| · Handle | 1set |
| · Single-sheet arm rest | 1set |
| · Body straps | 1set |
| · Knee crutches | 1set |

Optional Accessories :

- | | |
|-------------------------|------|
| · Double-sheet arm rest | 1set |
| · Versatile Head rest | 1set |
| · Head rest | 1set |

11. WH-PT2



- WH-PT2 head operating universal table with multifunction, designed by integrating the customers' suggestions and according to the marketing needs
- Can be suited for surgical operation of chest, abdomen, nose, throat, gynecology, and obstetrics, urology, orthopedics department
- Up and down of the tabletop adopts foot-pedal oil pump, easy and deft to operate
- The doctors have larger working range due to adjust all kind of positions are all at the head section of the tabletop during operating
- Put up the double layer device for the operating table, easy to take a picture by X-ray
- Mechanical structure, wouldn't be affected by paroxysmal things, like break the power supply. very safety and reliable
- Ideal operating table with the advantages of strong applicability
- Easy to operate
- Adjust conveniently
- Steady performance
- Can be supplied for all levels of hospitals
- Technical specifications:
 - Table top length: 2,000mm
 - Table top width: 500mm
 - Table top maximum and minimum height: 780mm/1,020mm
 - Trendelenburg/reverse trendelenburg: $\geq 22^\circ / \geq 22^\circ$
 - Lateral tilting:
 - Left: $\geq 22^\circ$
 - Right: $\geq 22^\circ$
 - Leg rest adjustment:
 - Down: $\geq 85^\circ$
 - Outward: $\geq 90^\circ$
 - Back rest adjustment:
 - Up: $\geq 75^\circ$
 - Down: $\geq 15^\circ$
 - Kidney bridge elevating: $\leq 135^\circ$ (table top sweus upward)

12. WH-C8



WH-C8 Hydraulic Operating Table with 2,050mm Length and 480mm Width

- Intended for surgical operations on head, neck, pleuroperitoneal cavity, perineum, and limbs in hospitals
- Oil pump provides hydraulic elevation, imported hermetic ring
- Operating table controlled on the two sides to achieve the required position
- 3008C boasts double beds
- Legs can be separated for filming
- Leg board dischargeable
- Traction frame can be used to conduct bone surgery
- Technical specifications:
 - Length: $2,050 \pm 50\text{mm}$
 - Width: $480 \pm 20\text{mm}$
 - Maximum and minimum height of the platform: $750 \text{ to } 950 \pm 50\text{mm}$
 - Forward: $\geq 30^\circ$
 - Backward: $\geq 25^\circ$
 - Left ward: $\geq 20^\circ$
 - Head board fold upward: $\geq 30^\circ$
 - Head board fold downward: $\geq 90^\circ$
 - Back board fold upward: $\geq 80^\circ$
 - Back board fold downward: $\geq 10^\circ$
 - Leg board fold downward: $\geq 90^\circ$
 - Waist board outspread: $\geq 90^\circ$ (dischargeable)
 - Waist board lifting: $\geq 120\text{mm}$

13. WH-D8



WH-D8 Hydraulic Stainless Steel Operating Table with $2,050 \pm 50\text{mm}$ Length

- Intended for surgical operations on head, neck, pleuroperitoneal cavity, perineum, limbs, and more in hospitals
- Oil pump provides hydraulic elevation, imported hermetic ring
- Operating table controlled on the two sides to achieve the required position
- Length: $2,050 \pm 50\text{mm}$
- Width: $480 \pm 20\text{mm}$
- Maximum and minimum height of the platform: $(750 \text{ to } 950) \pm 50\text{mm}$
- Forward: $\geq 30^\circ$
- Backward: $\geq 25^\circ$
- Left ward: $\geq 20^\circ$
- Head board fold upward: $\geq 30^\circ$
- Head board fold downward: $\geq 90^\circ$
- Back board fold upward: $\geq 80^\circ$
- Back board fold downward: $\geq 10^\circ$
- Leg board fold downward: $\geq 90^\circ$
- Waist board outspread: $\geq 90^\circ$ (dischargeable)
- Waist board lifting: $\geq 120\text{mm}$

14. WH-JY·B



WH-JY·B Universal Operation Table with $2,000\pm 50\text{mm}$ Length and $480\pm 20\text{mm}$ Width

- Mainly used by department of thoracic surgery, ophthalmology, ENT, obstetrics, and gynecology, and urology for common operations
- Adopts foot-stepping hydraulic pressure pump which combines oil-saving pump tank with driving machine, threadlike pole drive and air vat so as to control variable movements on the table
- Provides convenient operation, reliable orientation, compact and reasonable structure, novel design, and more
- Technical specifications:
 - Length: $2,000\pm 50\text{mm}$
 - Width: $480\pm 20\text{mm}$
 - Maximum and minimum height of the platform: $(700 \text{ to } 950) \pm 50\text{mm}$
 - Forward: $\geq 20^\circ$
 - Backward: $\geq 15^\circ$
 - Leftward: $\geq 15^\circ$
 - Back board fold upward: $\geq 75^\circ$
 - Head board fold upward: $\geq 35^\circ$
 - Head board fold downward: $\geq 40^\circ$
 - Leg board fold downward: $\geq 90^\circ$
 - Table rated load capacity: 135kg

Gynecological and Delivery Table

1. WH-II



WH-II electric operating table adopts famous imported brand electric machine for controlling. In order to realize the alterability of the operating table's different angle , the machine adjusts the turning angle of the all-in-one table. Gynaecology operating table can be controlled by two independent methods, hand or foot. Hand-holding remote controller can display operating status and have self-locking function without trigger by error. WH-II type has memory and restoring function. Therefore, the machine provides relaxed and professional treatment position for gynecological diagnosing , ultrasonic flaw detection, Induced abortion and some general gynecological surgery.

Technical Specifications:

Length:1300mm±50mm

Width:550mm±20mm

Maximum and minimum height of the platform :(650 mm~950 mm)±50 mm

Forward:≥10°

Backward:≥15°

Backboard up folded:≥50°

Leg bracket electrically elevating≥350mm

Auxiliary table:(350mmx450mm)±20 mm

Main Voltage:AC220v±10% 50Hz

2. WH-I



WH-I electric operating table adopts famous imported brand electric machine for controlling. In order to realize the alterability of the operating table's different angle , the machine adjusts the turning angle of the all-in-one table. Gynaecology operating table can be controlled by two independent methods, hand or foot. Hand-holding remote controller can display operating status and have self-locking function without trigger by error. Therefore, the machine provides relaxed and professional treatment position for gynecological diagnosing , ultrasonic flaw detection, Induced abortion and some general gynecological surgery.

Technical Specifications:

Length:1300mm \pm 50mm

Width:550mm \pm 20mm

Maximum and minimum height of the platform :(650 mm \sim 950 mm) \pm 50 mm

Forward: $\geq 10^{\circ}$

Backward: $\geq 15^{\circ}$

Backboard up folded: $\geq 50^{\circ}$

Leg bracket electrically elevating ≥ 350 mm

Auxiliary table:(350mm \times 450mm) ± 20 mm

Main Voltage:AC220v $\pm 10\%$ 50Hz

3. WH-III



WH-III gynaecology table is clinically used for gynaecologic examination, parturition of lying-in woman and other common operations.

Gynaecology table consists of chassis, column, table-board, pneumatic spring and etc. Table-board is divided into back plate, seat plate and auxiliary leg plate.

Pneumatic spring is manually controlled to adjust front and backward tilting of table-board and upward folding of back plate. Hydraulic oil pump is adopted to elevate table-board via foot-operated control. Mechanic transmission is adopted to jack up or fall chassis to the ground via foot-operated control.

Soft mattress for gynaecology table-board is made of high-density leatheroid and that for auxiliary leg plate is made of polyurethane. Cover casing of gynaecology chassis and both inner and outer cover casing of oil pump column are made of ABS plastics.

Technical Specifications:

Table Length: 1330mm \pm 50mm

Table Width: 550mm \pm 30mm

Auxiliary table: 340mm \times 460mm(\pm 20mm)

Forward inclining of the platform \geq 15°

Backward inclining of the platform \geq 12°

Back board fold upward \geq 70°

Table at the lowest level \leq 650mm

Table elevating stroke \geq 200mm

Auxiliary table stroke \geq 540mm

4. WH-E2



WH-E2 is developed on the basis of advanced technologies from abroad. It can be used for child delivery, surgical operations and medical examinations, including Caesarean birth.

The bed has micro touch controller for the back and forth and elevation ensuring convenient and flexible operation. It adopts the world famous brand-LINAK imported motor as the power system, producing low level of noise and ensuring reliable service. The back board adopts hand-operated air spring structure with the angle adjustable. The bed has hidden-type mobile auxiliary platform, making it convenient for medical workers in operation. It adopts footstep-operated control for fixing and mobility of the base. All the shell, boards and vessels are made of stainless steel, giving beautiful appearances and easy for cleaning.

Technical Specifications:

Length: 1900 ± 50 mm

Width: 600 ± 10 mm

Maximum and minimum height of the platform: 650 ± 100 mm

Length and width of auxiliary table:

Length: 520mm

Width: 500mm

up and down: ≥ 300 mm

Forward: $\geq 10^\circ$

Backward: $\geq 15^\circ$

Back board fold upward: $\geq 60^\circ$

Main Voltage: AC 220V 50Hz

Power: 150VA

5. WH-D2



WH-D2 can be used for child delivery, surgical operation, medical operations, and examinations including Caesarean birth.

The table adopts the world famous brand-LINAK gear pump for elevation, and has footstep-operated switch for backward and forward of the platform and elevation of back board. It adopts PC wheel of high quality. Auxiliary platform can be adjusted in size and can be discharged, providing convenience for medical workers. The table adopts footstep-operated controller for the fixing and mobility of the base. All the shell, and vessels are made of stainless steel, giving beautiful appearances, easy for cleaning and sterilization.

Technical Specifications:

Length:1900±50mm

Width:600±10mm

Maximum and minimum height of the platform :(750~950)±20mm

Length and width of auxiliary table:

Length: 600mm

Width: 600mm

Forward:≥15°

Backward:≥20°

Back board fold upward:≥70°

Main Voltage:AC 220V 50Hz

Power:150VA

6. WH-C2



WH-C2 type colligated delivery bed is applicable to childbearing and laying operation and normal surgical including chest, perineum and urine etc.

The main bed and assistant table board is linked as a whole one and dischargeable which adopt hydraulic pressure step and concealed stainless steel basin.

The oil pump and base chassis cover are all made by stainless steel.

Technical Specifications:

Bed length: 1900 ± 50 mm

Bed width): 600 ± 10 mm

Maximum and minimum height of the platform: $(750 \sim 950) \pm 50$ mm

Auxiliary table: 600×600 mm

Back board fold upward: $\geq 70^\circ$

Back board fold downward: $\geq 5^\circ$

Forward: $\geq 15^\circ$

Backward: $\geq 20^\circ$

7. WH-CC-1



WH-CC-1 multifunction obstetric chair is a kind of medical equipment for the diagnostic examination and clinical operation in obstetric and gynecological department, and is a special chair for woman to give birth, It is also possible for the mother and the newborn baby sleeping together after birth so that good nursing can be guaranteed.

WH-CC-1 obstetric chair is composed of two individual tables, one is for body while the other is for legs. The table is manually operated from one side to achieve demanded position. The adjustment of height is conducted through a hydraulic system while other movements are driven by special designed mechanism. Because of its reliability, easiness for operation and a wide selection of functional accessories, it is an ideal obstetric chair.

Technical Specifications:

1. The height adjustment of body-table: 650~800mm
2. Back section adjustment: Upwards -5~45°
3. Abdomen section adjustment: Upwards -8~20°
Downwards 0~8°
4. Body-table and leg-table is detachable and can be connected in way of plug-in.
5. Both the body-table and leg-table have brakes to stop in a still position.
6. Dimension of table board:
body-table 1350×650mm
Leg-table 800×550mm
Overall-Length 2150mm
7. Two in one type, CC-1 includes a body-table and a leg-table
8. Hydraulic system for height and manual control for table positions
9. Body-table can be postured to meet most of clinical demands
10. Super width to enable baby and mother sleep together
11. Stainless steel rails and accessories
12. Detachable mattress easy for cleaning and disinfection

8. WH-C-1



Intended use:

WH-C-1 multipurpose Gynecological Table is an utmost examination table, designed to use at gynecological examination and diagnosis, and small operation as well. With its functions and economy WH-C-1 is an ideal substitution for a modern gynecological department.

Special fetures:

1. A special selected motor, which is adopted to control the elevation of table, makes the table more stable and reliable, smooth and noiseless.
2. The back of the table is controlled via pneumatic elements thus the desired position can be achieved by slightly pushing the handle bar.
3. A footswitch provides the doctor with most convenience for operation.
4. The furnished accessory includes Knee Rest, Gripping Bar, and Collection Bucket making the table applicable and easy to operate.
5. The mattress is shaped with an ergonomics philosophy and modern art, and composed of with superior materials suitable for cleaning and sterilization.

Main specifications:

1. Total length: 1200*500 (with back section in level position)
2. Height: 700 to 950 (from floor to seat section)
3. Back section adjustment: upwards 0° to 60°
4. Trendelenburg adjustment: $\geq 8^\circ$
Antitrendelenburg adjustment: $\geq 15^\circ$
5. Power supply: 220V \pm 22V, 50Hz \pm 1Hz
6. Power consumption: 150VA

LDR Bed

1. WH-A04



WH-A04 is an intelligent delivery bed designed base on the human engineering. It can be used for labor, delivery, and recovery stage, or be used for gynecological examining, diagnosing and operation.

This bed pays more attention to the emotion of the mother and baby. The convenient and simple operation method ultimately reduces the working stress of the operator.

The operation is simple, flexible and convenient. The central brake system makes the bed more stable.

Clear marked control panels are setting on the guardrail on the both sides. Both nurses and patients can operate it conveniently.

The soft polyurethane guardrail provides comfort to nurses and patients.

The retractable guardrail allows the bed to get through the narrow aisle more easily and realize Zero-space transportation to the crash truck...

The guardrail can be equipped with inductive light. (Optional attachment)

The inductive light can lighten the ground automatically. (Optional)

The UPS system offers emergency use when the main power is off. (Optional)

The low bed position gives the mothers stable support.

The bed can reach various labor positions (e. G. Supine position, sitting position, lateral position, kneeling-squatting position) to comfort different lying-in women.

The leg holder is retractable and height adjustable, which can reduce the stress of the nurses.

The movable leg board offers a larger working space.

The operation of the foot rest and CPR spanner is easy.

It has CPR function, I. E. Back section quickly move down.

The polyurethane bedplate is comfortable, soft, anticorrosive, deodorize and easily cleaned.

The soft bed cushion has various colors available.

Bed dimension including bed end and bumper wheel: Length 2350mm Width 940mm

Bed dimension: Length 1950mm Width 880mm

Bed height: Lowest $\leq 540\text{mm}$ Highest $\geq 890\text{mm}$ (exclude the cushion)

Back section turning: $\geq 65^\circ$

Seat section turning: $\geq 12^\circ$

Trendelenburg: $\geq 8^\circ$

Leg section lifting distance: 110mm

Footrest swing out: $\geq 50^\circ$

Footrest folding: $\geq 75^\circ$

Guard rail up/down movement: 360mm

Castor dia.: 150mm

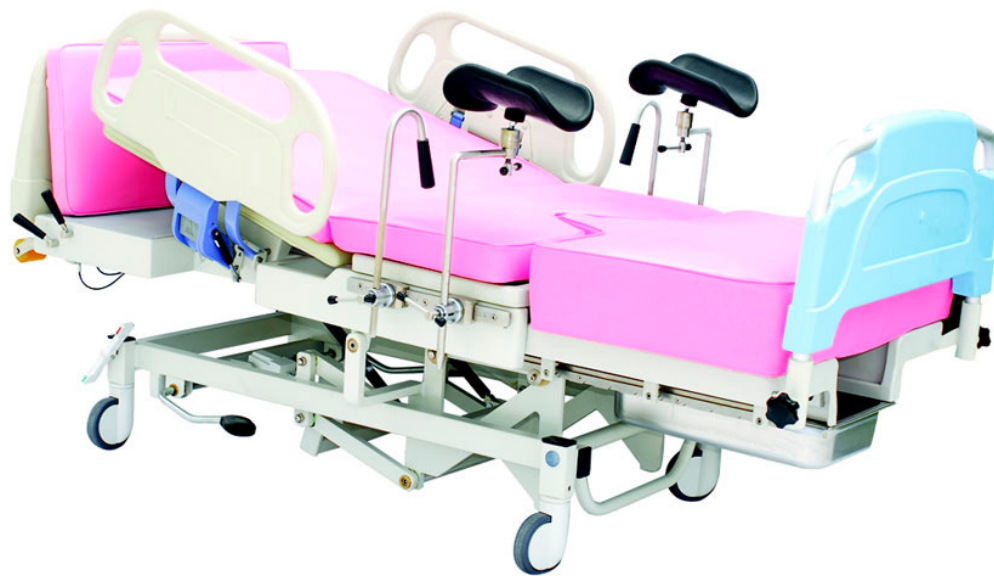
Bed cushion 1suit

I. V. Stand 1piece

Filth basin 1 piece

Power cord 1piece

2. WH-A02



WH-A02 LDR bed (comfortable) is a new designed delivery bed, nursing the lying-in woman through all stages of parturition, including labor, delivery and recovery stage. It can be easily changed into chair position to protect lying-in women from transfer from one bed to another. Electric controlled height adjustment, tilt adjustment and back section adjustment greatly enhance the work efficiency of the nurses.

Use imported European brand of motor and driven system.

Centre brake and swivel system make the bed stable.

Rotating side rails are easily operated.

Minimum height enables patient get on the bed easily.

Leg holder lockable, can turn forward & backward, left & right, height also adjustable.

I. V. Stand, height adjustable.

Head board, LED board moveable...

Cushion for newborn baby used during parturition.

Stainless steel basin and flume moveable for washing.

Grab handle for lying-in woman to exert her strength.

Cushion ventilating, water proof, soft and three different colors available, I. E. Rose, pink and blue.

Foot switch and hand control optional.

Bed dimension including bed end and bumper wheel: Length 2050mm, width 980mm

Bed dimension: Length 1815mm, width 880mm

Bed height: Lowest ≤ 580 mm, highest ≥ 950 mm (exclude the cushion)

Back section turning: $\geq 70^\circ$

Trendelenburg and reverse trendelenburg: Reverse trend $\geq 5^\circ$, trend $\geq 12^\circ$

Leg section telescope: 550mm

Castor dia.: 125mm

Accessories

Leg holder 1pair

Clamp 1 pair

Grab handle 1 pair

Foot rest 1 pair

Basin 1 PC

Water proof cushion 1 set

I. V. Stand 1 PC

Cushion for newborn baby 1 set

Cushion 1 set

(includes back cushion, seat cushion and assist platform cushion)

Electric wire 1 PC

Foot switch (or hand control) 1 PC (optional)

3. WH-CB·II



WH-CB·II obstetric beds are designed for various stages of care for patients .They can be used in labor, delivery and postpartum recovery period .The chair posture can be easily converted to provide adequate comfort for the lying-in women .The lying-in women don't need to be moved from one bed to another thanks to the beds' perfect structure. The adjustment of the height and inclining and the angle of the backboard are all driven by the famous imported electric machinery.KL-CB·II It possesses Ultra-low-position function.

Technical Specifications:

Length: 1900mm±50 mm

Width: 780 mm±20 mm

Maximum and minimum height of the platform: (550 mm~800 mm)±50 mm

Backboard up folded:≥60°

Backward:≥12°

Footplate bending upward :≥45°

Footplate bending external :≥45°

Footplate elevating:≥100mm

Main Voltage:AC220v±10% 50Hz

4. WH-CB-I



WH-CB-I obstetric beds are designed for various stages of care for patients .They can be used in labor, delivery and postpartum recovery period .The chair posture can be easily converted to provide adequate comfort for the lying-in women .The lying-in women don't need to be moved from one bed to another thanks to the beds' perfect structure. The adjustment of the height and inclining and the angle of the backboard are all driven by the famous imported electric machinery.

Technical Specifications:

Length: 1800mm±50 mm

Width: 780 mm±20 mm

Maximum and minimum height of the platform: (650 mm~950 mm)±50 mm

Backboard up folded:≥60°

Forward):≥5°

Backward:≥12°

Footplate bending upward :≥45°

Footplate bending external:≥45°

Main Voltage:AC220v±10% 50Hz