

New Product Introduction

Model: WH 6

Prepared by:

Dec 20th, 2010

Automatic Upper Arm Blood Pressure Monitor



Model: WH 6

Available in the Market:

Mar, 2008

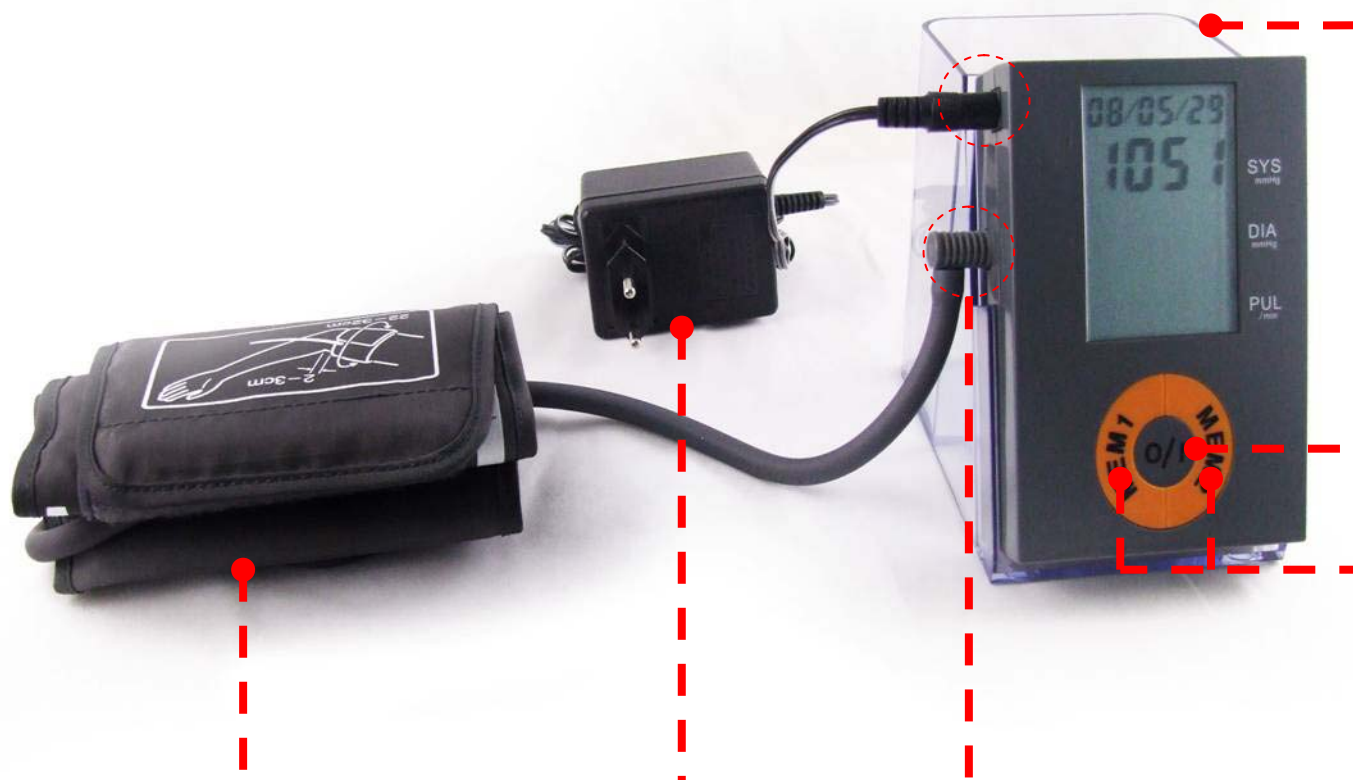
Market Positioning

Model: WH6

- ➡ **High Grade Level**
- ➡ **European ID Style**
- ➡ **Knockdown Design**

Main Components

Model: WH6



Cuff

Adapter (Optional)

Connecting here

Storage Case

O/I Button

Memory Button

Key Features

Model: WH6

European ID Style



Designed by European
senior ID engineer

Full of European style with
mighty straight outline

Cuff is put inside
here conveniently

One touch operation
to start a measurement

Key Features

Model: WH6

Knockdown Design



The main body can be conveniently disassembled from the storage case so that you can take it conveniently, even put it in your pocket.

Key Features

Model: WH6

Storage Case



Cuff and Adapter can be conveniently put in the storage case

Key Features

Model: WH6

Date/Time Setting



Hold 'MEM1' button and don't release, then press 'O/I' button at same time, the year will flash.

Press 'MEM1'/'MEM2' to add/subtract the number

Press 'O/I' button for confirmation. After year is confirmed, month, date and time will flash sequentially, just set them same as year setting.

Date/Time function records exactly when the user take the measurement so as for a better diagnosis

Key Features

Model: WH6

Memory Function



'M1' & 'M2' flash

Recorded in 'MEM1'



'M1' & 'M2' flash

Recorded in 'MEM2'

When the measurement is finished, 'M' & 'M2' will flash on the LCD to remind the user to record the memory. Just press 'MEM1' or 'MEM2' button to record the memory. If you don't press any button, or just push O/I button for another measurement, the memory won't be recorded.

Two separate memory storage is provided in one device

Memory Record

Key Features

Model: WH6

Memory Function

Just Push Button “MEM1” or “MEM2”



The average value for the latest three readings show first. Then single measurement shows sequentially.

Memory Recall



To clear 'MEM1' or 'MEM2' memories, push button 'MEM1' or "MEM2" for 5 sec.

Memory Clearance

Detailed Features

Model: WH6

Measuring Method	Oscillometry
Measuring Range	40 to 260 mmHg (blood pressure)
	40 to 160 beats/minute (pulse rate)
Measuring Accuracy	± 3 mmHg for systolic and diastolic pressure
	$\pm 5\%$ of the reading for the pulse rate
Inflation	Automatic
Rapid Deflation	Electromagnetic valve
Power Source	4 "AA" \times 1.5V or AC Adapter
Memory	2 x60 sets of memories
Operation Temperature and Humidity	+ 10°C to + 40°C, 85% and below
Storage Temperature and Humidity	-20°C to + 50°C, 85% and below
Cuff Size	Applicable for arm size 22-32 cm

Accessories

Model: WH6



**Transparent
Storage Case**



**Durable Nylon Cuff
with D-ring**



**High Quality
AC Adapter (Optional)**

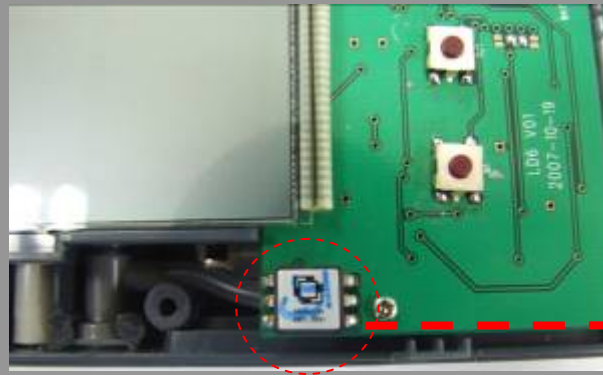
Quality Assurance

Model: WH6

Semiconductor Sensor Used



Capacitance sensor
by some famous manufacturers



Semiconductor sensor
by our company



The semiconductor sensor ensures stable performance against ambient temperature and humidity fluctuation

Quality Assurance

Model: WH6



CE 0123

The quality system passed ISO 13485:2003 and the product passed CE0123.

More than 8000 subjects are tested carefully during debugging the core algorithm.

We claim 2 YEARS WARRANTY
since the date of purchase